

Cannie Wind Farm Project

COMMUNITY UPDATE February 2025



In planning for Australia's clean energy future, RES acknowledges its rich history. We pay our respects to the Wamba Wamba, Barapa Barapa and Wiran Nations, the Traditional Custodians of the Country on which the Cannie Wind Farm Project is proposed.

We recognise their ongoing connection to land and waterways and pay our respects to Elders past and present.



up to 1300 MW
Capacity



up to 174 TURBINES
Capacity



CONNECTION ROUTE
Under investigation



Battery Storage
Under investigation



600,000+ HOMES
Supplied with electricity



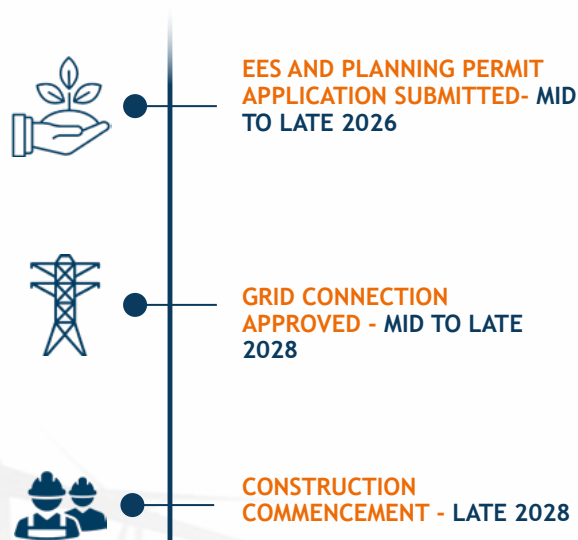
500+
Jobs during construction

PROJECT OVERVIEW

RES is proposing to develop the Cannie Wind Farm approximately 25 kilometres northwest of Kerang, in the Gannawarra Shire Council area, within the Victorian Murray River Renewable Energy Zone (REZ). The wind farm will connect to the proposed Victoria - NSW Interconnector West (VNI-West) transmission line.

The boundary of the proposed wind farm has been refined, removing an area north of O'Brien Road. The wind farm now covers approximately 14,000 hectares of privately owned land, with the wind farm to co-exist with existing farming activities. It will include up to 174 turbines with a tip height of up to 280m and a total capacity of up to 1300 MW. Landowners within the wind farm boundary have entered into preliminary exclusive agreements with RES to host the wind farm. The Cannie Wind Farm will also require a transmission easement of up to 80m in width to enable the connection of the wind farm to the National Electricity Market (NEM).

PROJECT TIMELINE



**Note: Timing is reliant on VNI West transmission line development and may change if there are delays*



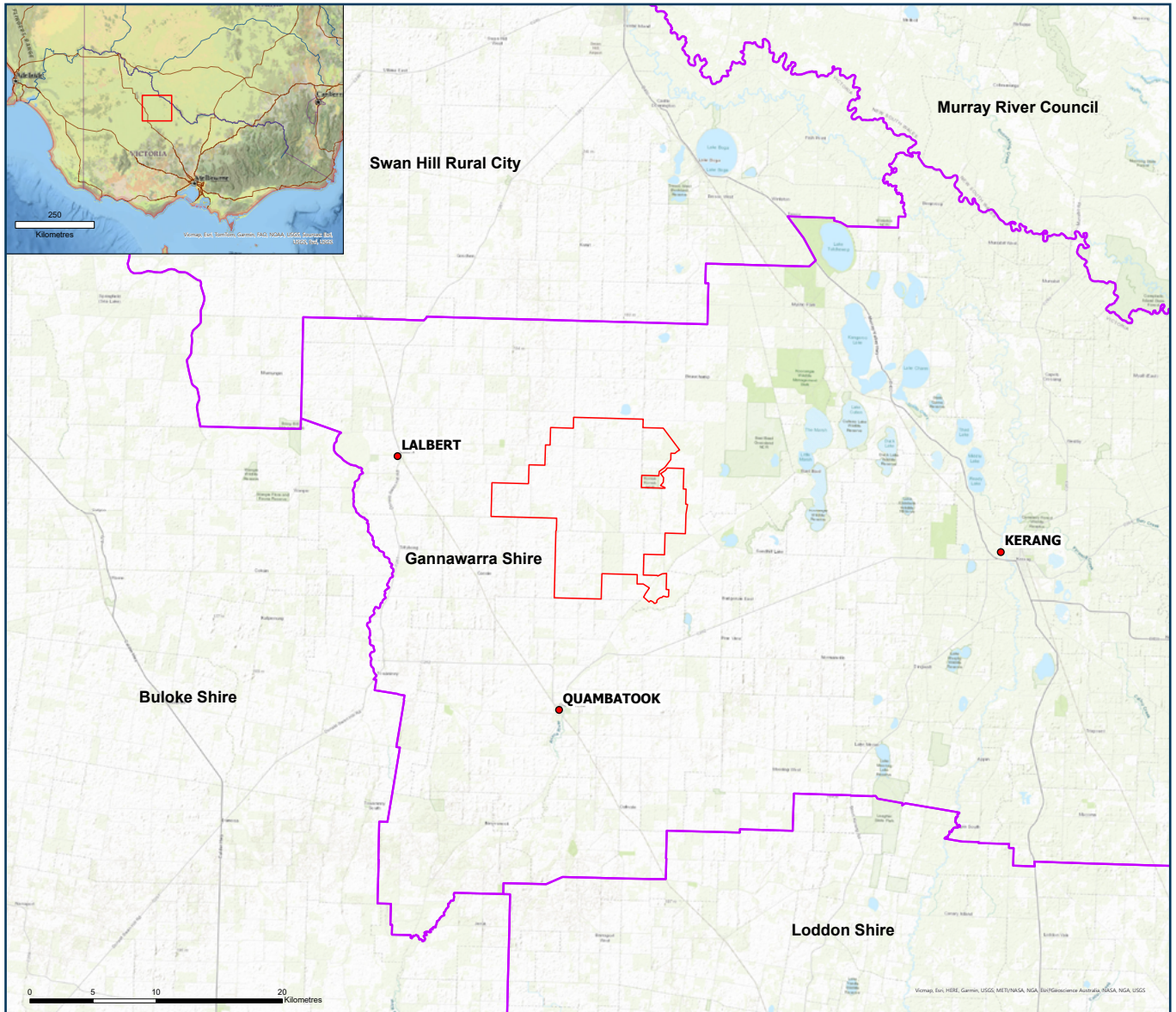
Cannie Wind Farm Project

COMMUNITY UPDATE February 2025



PROJECT LOCATION

- SITE BOUNDARY (2024)
- LOCAL GOVERNMENT AREAS



Cannie Wind Farm Project

COMMUNITY UPDATE February 2025



PROJECT OFFICE OPEN

To ensure the community can speak directly with RES about the project, we have opened the Cannie Wind Farm Project Office at the Kerang Neighbourhood House. Our local Community Liaison Officer, Melissa Maher, will be available on Mondays and Thursdays to answer your questions. Make an appointment by calling 1800 118 737, email Melissa at info@cannie-windfarm.com or just drop in on Monday or Thursday when the A frame is out the front of the Neighbourhood House.

RES also has small sponsorships available to worthy community projects in towns near the wind farm, such as Quambatook, Lalbert and Kerang. We have recently sponsored Quambatook Bowls Club, Wandella Cricket Club and Kerang Tinsel & Tongs Christmas event. We will also be developing a shared benefit scheme for wind farm neighbours and the broader community that will run for the operational life of the project (30+ years).

If you have ideas on how the project can achieve lasting benefits for local communities and businesses, please contact us.



ENVIRONMENTAL STUDIES

In mid-2024, RES submitted a referral to the Department of Transport and Planning (DTP) under the Victorian Environmental Effects Act (1978). DTP have determined that an Environmental Effect Statement (EES) is required for the development of the wind farm and powerline connection to the proposed VNI-West. This determination has finalised our environmental referrals, with the Commonwealth Department of Climate Change, Energy, the Environment and Water, earlier determining the project is a controlled action under the Environment Protection and Biodiversity Conservation Act 1999. DTP will now develop EES scoping requirements for public consultation and set up a Technical Reference Group to advise us on EES preparation.

You can view the referral on the Department of Transport and Planning website using this website URL www.planning.vic.gov.au/environmental-assessments/browse-projects/cannie-wind-farm or the QR code below.



Environmental investigations, including flora and fauna surveys, have commenced. We have engaged leading environmental and planning consultant, ERM, to carry out the environmental investigations and prepare the EES and Planning Permit Application.

Community information sessions will be held throughout the EES preparation process in 2025 to consult and gather feedback on various draft studies including flora and fauna, noise and visual assessments, traffic management and social impacts. We will also be consulting with key organisations such as Local Councils, conservation groups, First Nations groups, business groups and community groups individually about potential impacts and opportunities.

Cannie Wind Farm Project

COMMUNITY UPDATE February 2025



POWERLINE INVESTIGATIONS

RES has identified three broad corridors to potentially support the high voltage powerline route from the wind farm site to connection along the proposed VNI West transmission route. We have started investigating the land use, cultural, social and environmental constraints within each corridor and have been discussing potential routes with landowners in these areas. The Cannie Wind Farm connection will be located with the agreement of landowners. RES does not have compulsory acquisition powers to secure a powerline easement.

We are eager to hear from landowners in these corridors to understand the constraints and opportunities for powerline development in the area. We encourage you to view the referral application and contact us using the email or phone number below, if you have any questions or comments.

RES IN AUSTRALIA

RES is the world's largest independent renewable energy company, active in 24 countries around the globe. RES entered the Australian market in 2004 and now employs over 180 people, with offices across multiple metropolitan and regional locations. RES is engaged in all technologies: onshore wind, offshore wind, solar and storage and offers development, construction, asset management and operations & maintenance services across Australia.

RES leveraged global knowledge and talent to develop projects in the early phases of the renewable energy industry in Australia, including Taralga Wind Farm in New South Wales, Ararat Wind Farm in Victoria and Emerald Solar Farm in Queensland. More recently, RES has successfully developed Murra Warra Wind Farm in Victoria and Dulacca Wind Farm in Queensland.



CONTACT THE TEAM

☎ 1800 118 737

🌐 www.cannie-windfarm.com

✉ Info@cannie-windfarm.com

