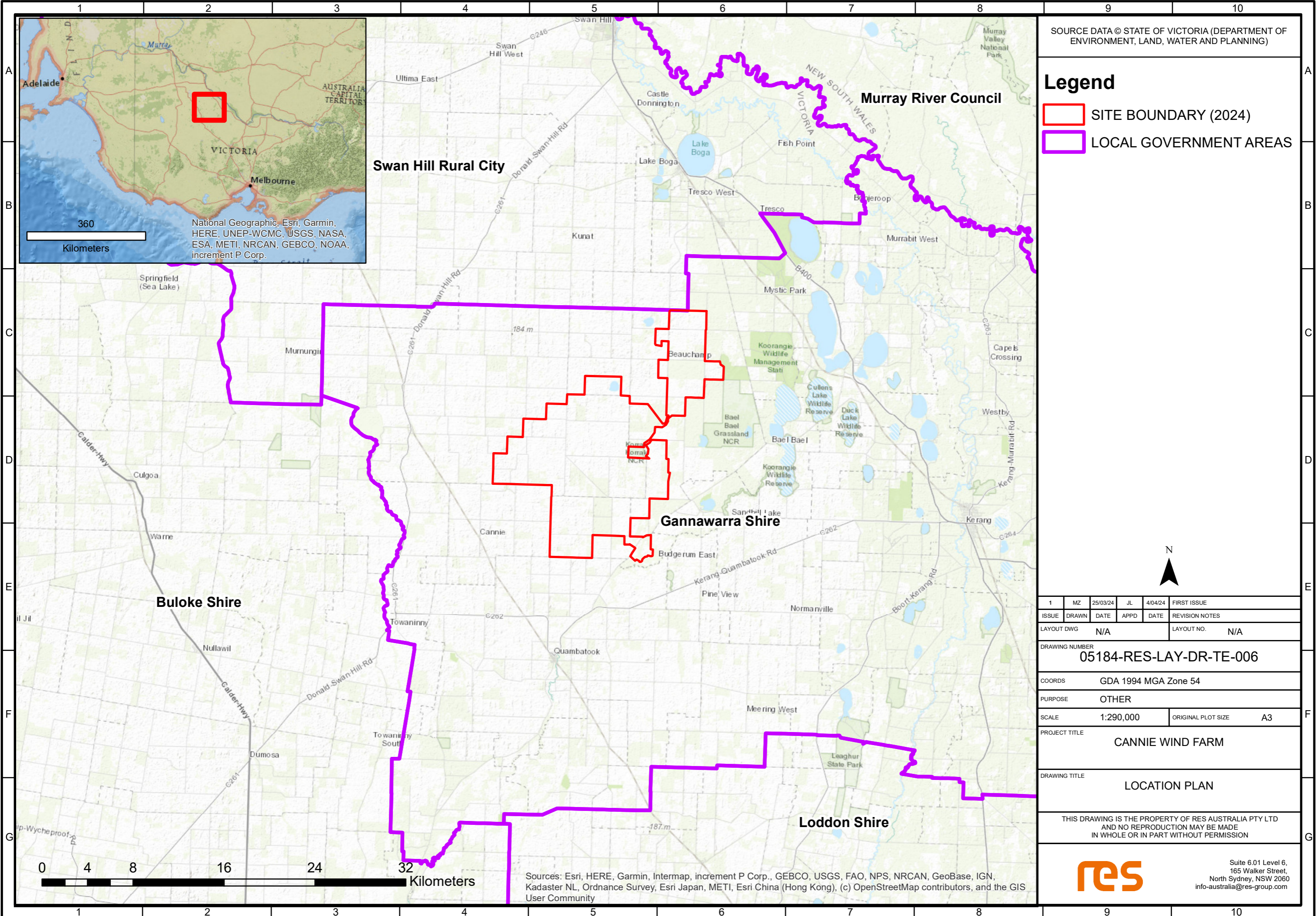




SOURCE DATA © STATE OF VICTORIA (DEPARTMENT OF ENVIRONMENT, LAND, WATER AND PLANNING)

Legend

- SITE BOUNDARY (2024)
- LOCAL GOVERNMENT AREAS



1	MZ	25/03/24	JL	4/04/24	FIRST ISSUE
ISSUE	DRAWN	DATE	APPD	DATE	REVISION NOTES
LAYOUT DWG	N/A			LAYOUT NO.	N/A
DRAWING NUMBER					
05184-RES-LAY-DR-TE-006					
COORDS					
GDA 1994 MGA Zone 54					
PURPOSE					
OTHER					
SCALE		1:290,000		ORIGINAL PLOT SIZE	
				A3	
PROJECT TITLE					
CANNIE WIND FARM					
DRAWING TITLE					
LOCATION PLAN					
THIS DRAWING IS THE PROPERTY OF RES AUSTRALIA PTY LTD AND NO REPRODUCTION MAY BE MADE IN WHOLE OR IN PART WITHOUT PERMISSION					

Sources: Esri, HERE, Garmin, Intermap, increment P Corp., GEBCO, USGS, FAO, NPS, NRCAN, GeoBase, IGN, Kadaster NL, Ordnance Survey, Esri Japan, METI, Esri China (Hong Kong), (c) OpenStreetMap contributors, and the GIS User Community



Suite 6.01 Level 6,
165 Walker Street,
North Sydney, NSW 2060
info-australia@res-group.com