

Cannie Wind Farm Project

COMMUNITY UPDATE May 2024



In planning for Australia's clean energy future, RES acknowledges its rich history. We pay our respects to the Wamba Wamba, Barapa Barapa and Wiran Peoples, the Traditional Custodians of the Country on which the Cannie Wind Farm Project is proposed.

We recognise their ongoing connection to land and waterways and pay our respects to Elders past and present.



up to 1300 MW
Capacity



up to 174 TURBINES
Capacity



CONNECTION ROUTE
Under investigation



Battery Storage
Under investigation



600,000+ HOMES
Supplied with electricity



500+
Jobs during construction

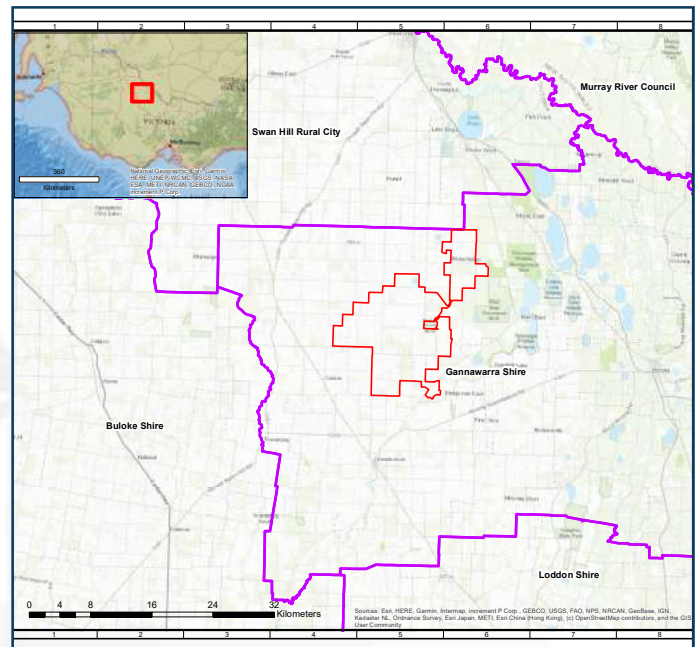
PROJECT OVERVIEW

RES is proposing to develop the Cannie Wind Farm approximately 25 kilometres (km) northwest of Kerang and 8 km north of Quambatook, in the Gannawarra Shire Council area, within the Victorian Murray River Renewable Energy Zone (REZ). The wind farm will connect to the proposed Victoria - NSW Interconnector West (VNI-West) transmission line.

The proposed wind farm would cover approximately 17,000 hectares of privately owned land, with the wind farm to co-exist with existing farming activities. RES has updated preliminary constraints mapping of the site and as a result has reduced the number of turbines to a maximum of 174, with a tip height of up to 280m and a total capacity of up to 1300 MW. Landowners within the wind farm boundary have entered into preliminary agreements with RES to host the wind farm.



Legend
SITE BOUNDARY (2024)
LOCAL GOVERNMENT AREAS



The Cannie Wind Farm will also require a powerline easement of up to 80m in width to enable the connection of the wind farm to the National Electricity Market (NEM).

Cannie Wind Farm Project

COMMUNITY UPDATE May 2024



Environmental Referral

Following on from recent Community Information Sessions in Quambatook and Lake Boga, RES has submitted a referral to the Department of Transport and Planning (DTP) under the Environmental Effects Act (1978).

The referral covers the wind farm development area, as well as a study areas for the location of a high voltage powerline to connect the wind farm to the proposed VNI-West transmission network.

When the referral is live on the DTP website we will let you know via the local newspapers and updating the News section of our website.

We encourage you to view the referral application and contact us using the email or phone number below, if you have any questions or comments.

Powerline Investigation Area

RES has identified 3 broad study areas for investigations relating to the high voltage powerline route from the wind farm site to a connection point with the proposed VNI West transmission line. The 3 study areas are displayed on the attached map.

Potential routes and impacts will be discussed with landowners in these areas to inform the most suitable route. RES does not have compulsory acquisition powers to secure a powerline easement. The Cannie Wind Farm connection will be located with the agreement of landowners and permission will be sought from landowners prior to any proposed site assessments.

During these investigations RES and our consultants will conduct the following studies to determine the most appropriate route that minimises visual, environmental, cultural, social and land use impacts:

- Environmental constraints mapping and ecological studies.
- Land use investigations such as agricultural practices.
- Cultural heritage assessments.
- Visual assessments.

We are keen to hear from landowners in these study areas to understand the constraints to, and opportunities for powerline development in the area. We will begin community consultation in these study areas shortly.

If you would like to stay informed about the Project via email please register your details using the form on the “Contact Us” section of our webpage or send us an email using the details below.

Who are we:

RES is the world’s largest independent renewable energy company, active in 24 countries around the globe.

Establishing operations in Australia in 2004, RES leveraged global knowledge and talent to develop projects in the early phases of the renewable energy industry in Australia, including Taralga Wind Farm in New South Wales, Ararat Wind Farm in Victoria and Emerald Solar Farm in Queensland. More recently, RES has successfully developed Murra Warra Wind Farm in Victoria and Dulacca Wind Farm in Queensland

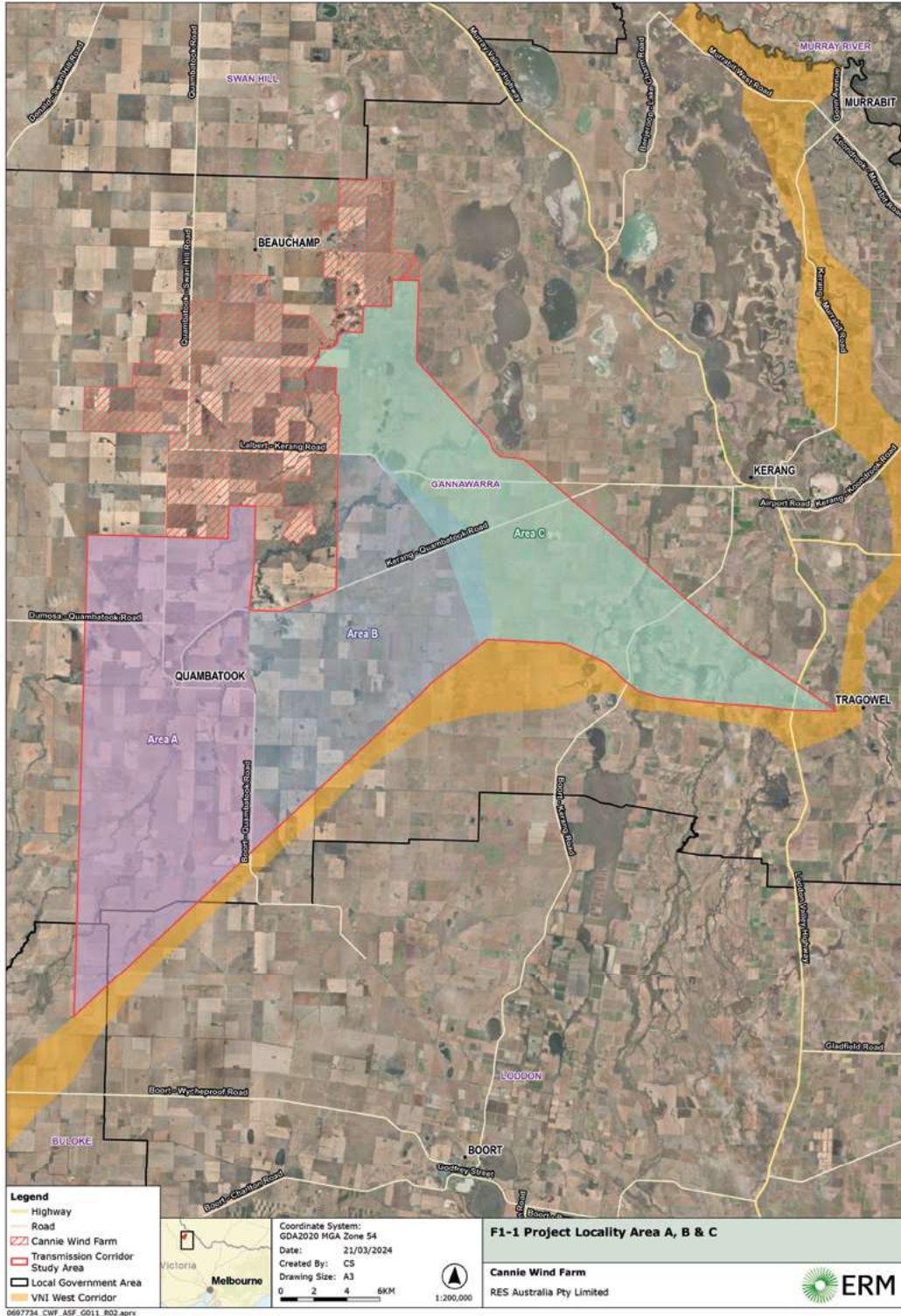


Cannie Wind Farm Project

COMMUNITY UPDATE May 2024



Cannie Wind Farm and Transmission Connection Preliminary Study Areas



CONTACT THE TEAM

1800 118 737

www.cannie-windfarm.com

Info@cannie-windfarm.com

